

## MECHANICALLY OPERATED MULTIPLE-DISC CLUTCH VA-...

2015

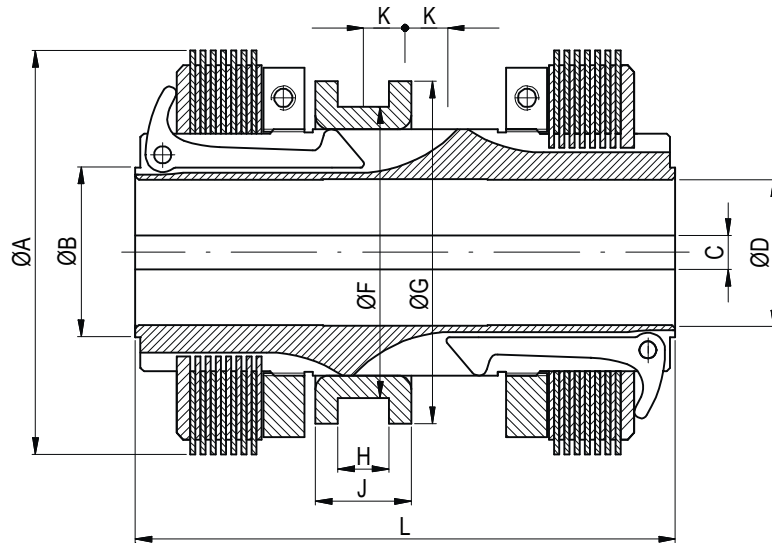
Mechanically operated multiple-disc clutches VA-... are designed to work in oil only. They are made in two versions: with steel/steel and steel/cermet discs. Clutches with steel/cermet discs are characterized by better dynamic characteristics, i.e. higher dynamic moment, lower residual torque, ability to transmit higher heat loads during make-time, and increased wearability. They are used in mechanical drive control systems in machine tools and other machines. Drivers for these clutches are custom made.

### VAB

Double clutch with central control element at idle running

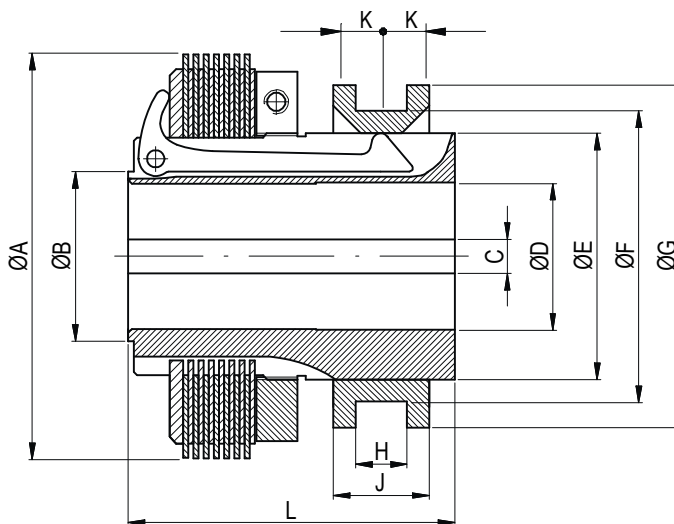
### VAC

double clutch with central control element at idle running, switched through the shaft



### VAG

single clutch with double position of the control element at idle running



Type	Torque [Nm]		Weight [kg]	A	B	C	D [H7]	E	F	G	H	J	K	L
	stat.	dyn.												
VAB-137	48/63*	40/50*	2,8	90	37	8N9x2,2	32	-	70	85	10H7	20	11	137
VAC-158	120	100	5,6	115	49	10Js9x2,7	42	-	-	100	-	28	13	158
VAB-158S	200*	170*	5,7	125	49	10Js9x2,7	42	-	85	100	15H9	28	13	158
VAG-94	120/150*	100/120*	3,7	115	45	8N9x2,2	36	72	88	100	15H7	28	13	110
VAG-94S	200*	170*	3,9	125	60	10Js9x3,3	40	76	100	114	15H9	32	13	130

\*) torque for clutches with steel/cermet discs