

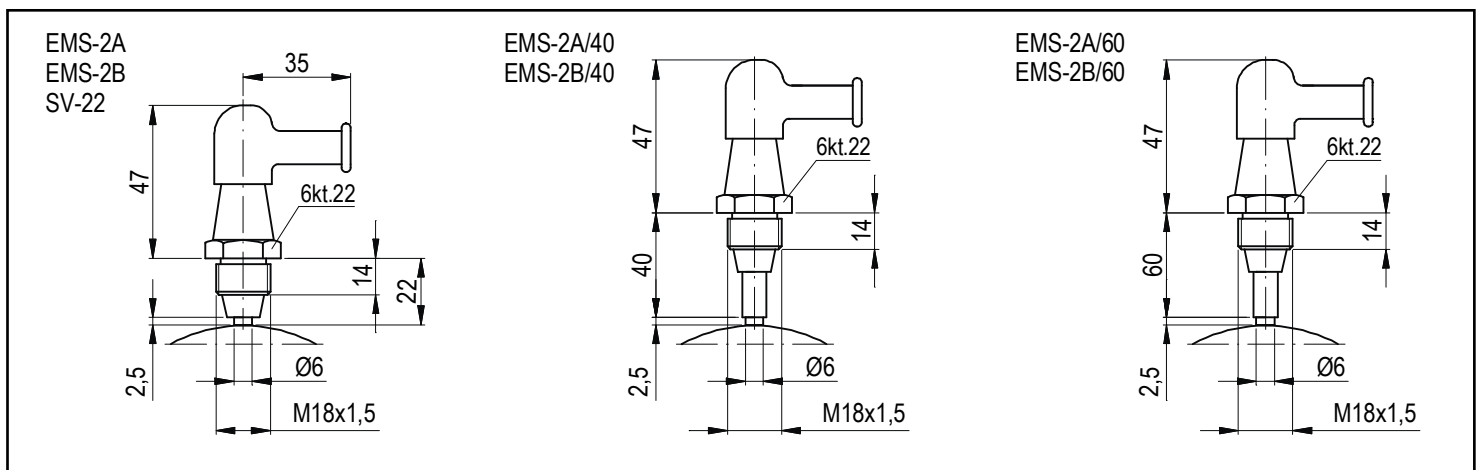
BRUSH HOLDER

2015

Designed for supplying power to electromagnetically operated ring clutches (with a rotating coil). Maximum supply voltage 48 V. At contact ring speed exceeding 10 m/s it is advisable to use 2 brush holders moved in relation to each other by not more than 90°. In single-ring clutches, the negative end of the current generator should be connected to earth, and the positive end to the brush holder.

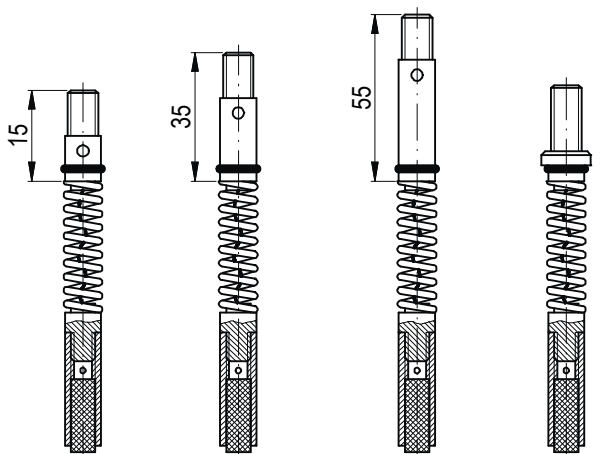
- Types:
- oil operation ⇒ typ EMS-2A, EMS-2A/40, EMS-2A/60
 - oil operation ⇒ typ SV-22 – brush holder with additional insulation which makes it possible to mount it on the outside of the clutch casing
 - dry operation ⇒ typ EMS-2B (with a carbon brush)

Remember to check the wear of the brush regularly. Permissible brush wear can be checked by unscrewing the brush holder (making a single turn) from the casing or body of the machine tool. If the brush is worn out, the current will no longer be supplied to the coil. A worn out brush should be replaced with a new one. The brush life is approx. 1000 hours.



Replaceable elements

1. Brush assembly sets



Symbols:				
(brazen)	S2A-0-02	S2A-0-02/40	S2A-0-02/60	22-0-02
(carbon)	S2B-0-02	S2B-0-02/40	S2B-0-02/60	

2. Brushes



Symbols: S2A-0-03 (Brazen) S2B-0-03 (carbon)

Brush holder symbol	Brush assembly set symbol	Brush symbol
EMS-2A	S2A-0-02	S2A-0-03
EMS-2A/40	S2A-0-02/40	
EMS-2A/60	S2A-0-02/60	
SV-22	22-0-02	
EMS-2B	S2B-0-02	S2B-0-03
EMS-2B/40	S2B-0-02/40	
EMS-2B/60	S2B-0-02/60	