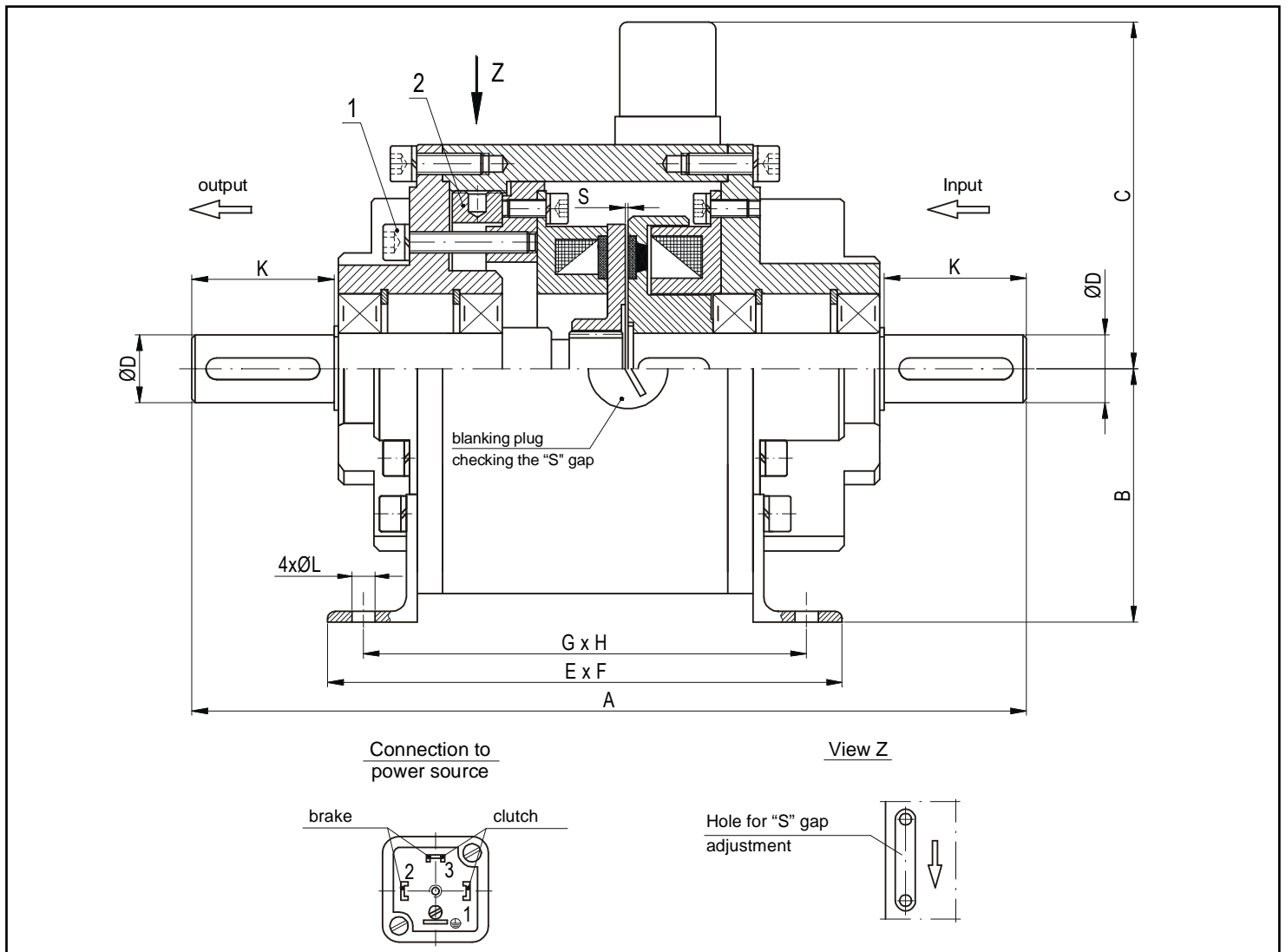


CLUTCH-BRAKE SET ESM15-...-A

2015

Clutch-brake sets are designed for dry work only and operated at 24 ± 1 V DC. In order to protect the coil of the clutch and brake from a breakdown, a quenching member should be used in the supply system, e.g. a resistor connected in parallel (the resistance of which should be approx. 10 times higher than the resistance of the coil), a semiconductor diode, or a resistor and a diode. The "s" gap increases during operation, which in extreme cases may result in malfunction of the set. The gap size should be checked when the brake is engaged, by means of a non-magnetic gap gauge. Loosen the 4 screws (1) and, turning the nut (2) according to the arrow direction (view Z), reduce the gap to the value specified in the table. Once the screw (1) has been adjusted, turn it tight and check the gap again.



Type	Torque dyn.* [Nm]	Max. speed [min ⁻¹]	Coil power [W] clutch/brake	Weight [kg]	Dimensions [mm]										
					A	B	C	D [k6]	E	F	G	H	K	L	S
ESM15-5-A	5	3000	12/11	3,1	195	63	88	14	120	103	104	82	30	7	0,2
ESM15-15-A	15		20/14	6,7	235	71	97	19	145	120	124,5	100	40	9	0,25
ESM15-30-A	30		26/19	8,5	276	90	111	19	165	160	135	130	40	9	0,3
ESM15-40-A	40		25/21	14,5	305	100	124	28	186	182	165	140	50	11	0,3
ESM15-60-A	60		32/24	15	305	100	124	28	186	182	165	140	50	11	0,35

Please note that dimensions "D" and "K" are made at the customer's request (groove dimension according to PN/M-85005)

*) at n = 750 rpm

The manufacturer reserves the right to modify the products in order to improve their quality

We offer several versions of clutch-brake sets, available on request

